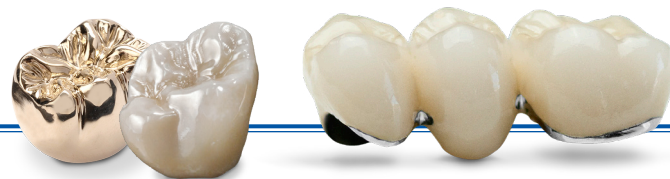




# PRODUCTS & SERVICES FEE SCHEDULE FOR 2025

Crown & Bridge • Removables • Implant Services

## Crown & Bridge



### Porcelain to Metal Restorations

Non-Precious (Base/with metal occlusal add \$30).....	\$145
Semi-Precious (Noble/with metal occlusal add \$30, includes one DWT).....	\$195
Precious (White/Yellow + metal).....	\$155

### All-Ceramic Restorations

ADL Zr™ (layered).....	\$199
ADL Zr™ (bridge/per unit) .....	\$205
ADL ZirBrux (bridges add \$21 per connection)(full contour).....	\$109
IPS e.max® CAD (posterior) .....	\$129
IPS e.max® CAD (anterior, esthetic) .....	\$190
Empress® - Press (crown, veneer) .....	\$199

### Full Cast Restorations (metal additional)

Base Metal (White/Yellow, per unit plus metal) .....	\$119
Semi-Precious (White/Yellow, per unit plus metal).....	\$119
Precious High Noble (White/Yellow, per unit plus metal).....	\$119

### Additional Services

Porcelain Facial Margin (per unit) .....	\$52
Crown Fit to Partial.....	\$83
Precision Attachment (labor).....	\$62+
Diagnostic Wax-Up (per tooth) .....	\$41
Soft Tissue Model (2 sites) .....	\$38
Survey Crown for Partial .....	\$52
ADL CAD Design Service.....	\$21
Printed Models .....	\$41
Scan STL File.....	\$41
PMMA.....	\$82
Custom Shade (In-Lab).....	\$92

## Removables



### Dentures

Complete Denture Set-up/ Try-in .....	\$102*
Lucitone 199® Pack Finish (standard) .....	\$160
Complete Denture Set/Finish (Lucitone®) No Try-In .....	\$225*
Duplicate Complete Denture (AED).....	\$150
Denture Reset (1st one N/C) .....	\$82

### Partials

Partial Denture Set-up/ Try-in .....	\$98*
Partial Denture Finish.....	\$129
Partial Denture Set/ Finish (no try-in).....	\$185*
Flipper (1-3 Teeth & 2 w/ clasps).....	\$150*
Partial Reset (1st one N/C).....	\$78

### Flexible Partials

TCST™/Valplast®/DuraFlex™ Set-up/ Try-in .....	\$99*
TCST™ Finish.....	\$190
Valplast® Finish.....	\$201
DuraFlex™ Finish.....	\$245
TCST™ Complete (no try-in).....	\$270*
Valplast® Complete (no try-in).....	\$280*
DuraFlex™ Complete (no try-in) .....	\$325*

\*plus teeth

### Frameworks

VisiClear™ Framework (Clear Flexible Framework) .....	\$197
Vitalium® 2000 .....	\$190
Unilateral .....	\$150
Cast Mesh Strengtheners .....	\$180

### Bite Guards

ADL ClearFit (hard acrylic).....	\$160
Talon® (soft inner liner).....	\$197
ADL DualGuard (hard/soft).....	\$92
Pro-Form Mouthguard (multiple colors).....	\$150+
Clear Flex.....	\$160
KeySplint (3D Printed).....	\$145

### Reline

Reline (hard, 2 day).....	\$129
Rebase (all new acrylic) .....	\$160
Super Soft Reline.....	\$186

## Removables Cont.

### Repair (2 days)

Acrylic Repairs.....	Call for Quotes
Add Tooth .....	\$92*
Replace Tooth.....	\$88*
Additional teeth added or replaced .....	\$28 <sup>ea</sup> .

Next Day (2 days)-Relines & Repairs-Call in by 9:30 a.m. returned by 4:30 p.m. **next day**  
Same Day-Relines & Repairs-Call in by 9:30 a.m. returned by 4:30 p.m. **same day** (add \$83)

## Implant Services

### Digital Planning/CBCT

Printed Surgical Guide w/ Dicom Planning .....	\$360*
Surgical Guide Printing Only Service .....	\$150

\*Includes one titanium sleeve. Additional sleeves are \$26-\$66 per implant

### ADL Implant Fixed

ADL now offers a predictable implant pricing plan. We have simplified our offerings to help you determine your final fee.

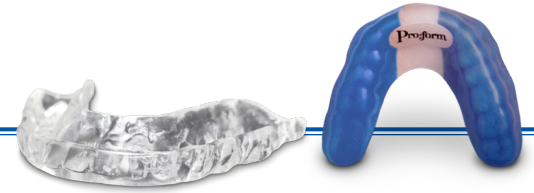
<b>ADL Predictable Crown (Titanium Abutment).....</b>	<b>\$559</b>
Package includes restoration, abutment ( <i>manufacturer specific</i> ), final screw, soft tissue model, analog, seating jig, and labor with either PFM, IPS e.max®, ADL Zr™ Layered, or ADL ZirBrux®.	

<b>ADL Predictable Crown (Zirconia Abutment).....</b>	<b>\$669</b>
Package includes restoration, abutment ( <i>manufacturer specific</i> ), final screw, soft tissue model, analog, seating jig, and labor with either semi-precious, IPS e.max®, or BruxZir®.	

<b>ADL Screw-Retained/Hybrid Crown Cementation.....</b>	<b>+\$27</b>
Restoration of choice is cemented to custom milled abutment at the laboratory and prepared for seating with access hole.	

<b>Variobase (Straumann and Bio-Horizon Only) .....</b>	<b>\$499</b>
Package includes restoration, ti base, final screw, soft tissue model, analog, seating jig, and labor with either IPS e.max® or ZirBrux.	

<b>Custom Healing Abutment .....</b>	<b>\$98</b>
<b>ADL Compatible Screw Retained Crown.....</b>	<b>\$415</b>
Package includes restoration, non-OEM ti base ( <i>compatible with most major manufacturers</i> ), final screw, soft tissue model, analog, seating jig, and labor with either IPS e.max® or ZirBrux.	



Laser Retention Loop to Frame.....	\$82
Laser Cast Mesh Saddle to Frame .....	\$119
Laser Cast Clasp to Frame .....	\$129
Fiber Mesh Reinforcement ( <i>per site</i> ).....	\$52
Laser Weld .....	\$105+



### Removable Overdenture with Titanium Milled Bar Estimates

ADL is proud to offer Ti milling capability for ALL implant-retained overdentures/hybrid restorations.

Milled Bar Per Implant (CAD designed + attachments) .....	\$559
Removable Denture Portion ( <i>incl. attach., housing, overcast and finished prosthesis</i> ).....	\$1,300+/-

### Hybrid Restoration

Milled Titanium Bar - Implant/Abutment ( <i>up to 5 sites</i> ) .....	\$2,055
Implant Denture Finish ( <i>fixed detachable - premium acrylic</i> ).....	\$425
Opaque Bar .....	\$61
PMMA Trial Appliance .....	\$1,060
Full Arch Zirconia Bridge w/ Gingival ( <i>up to 5 sites</i> ) .....	\$3,880
Siltex Matrix .....	\$38

### Overdenture with Attachments

2 Implants without Metal Reinforcement ( <i>estimate</i> ).....	\$1,400+/-
4 Implants with Metal Reinforcement ( <i>estimate</i> ).....	\$2,500+/-

\* Cost estimates include abutments and denture processing.

### Chairside Conversions

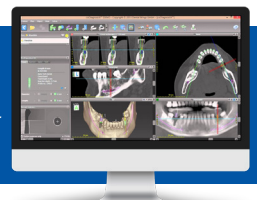
<b>In-Office Chairside Conversion (<i>per arch</i>) .....</b>	<b>\$950</b>
---	--------------

\* Plus travel if outside Louisville Metro area.

<b>Immediate Denture Conversion Protocol .....</b>	<b>\$545+/-</b>
--	-----------------

Package includes immediate denture, clear surgical duplicate and silicone bite registration.

Collaborate right on your screen with highly trained ADL Technicians. We work directly with oral surgeons to convert your patient's denture—right at chairside.





All fixed implant restorations are all-inclusive and will be fabricated following manufacturer protocols using only approved materials and parts. ADL does not condone the use of off-brand parts to save costs because they void the manufacturer's warranty. ADL will only use generic components if instructed to by the prescribing clinician. We have attempted to quote the procedures and restorations in this fee schedule utilizing current market pricing. From time to time, manufacturers will increase their cost and these fluctuations will be passed on to the clinician.

It is important to note that in order to obtain an accurate fee quote you must e-mail or fax ADL, attention Chris Morris, the surgical report or plan and the restorative plan. This will be evaluated and a detailed restorative quote will be finalized and presented to the clinician. Only then will ADL be able to accurately determine the final restorative fee.

ADL offers open payment terms (net 30) and a full credit application that must be completed prior to setting up an account with ADL. Until this is established, a major credit card must be on file before work will be accepted or returned completed. All information shared with ADL will be kept in the strictest confidence and securely stored. No personal or financial information will be shared without written consent of the information's owner. A full description of ADL's credit and remake/return policies is located on the back of every signed prescription form. ADL will only accept work from licensed clinicians and does not work with the general public in any way.